

T38 threaded coupler sleeve for top hammer drill rod

In addition to standard equal-diameter coupling sleeves, we also offer reducing coupling sleeves that can change the thread type and size, making them suitable for top hammer drilling systems used in underground deep hole mining.

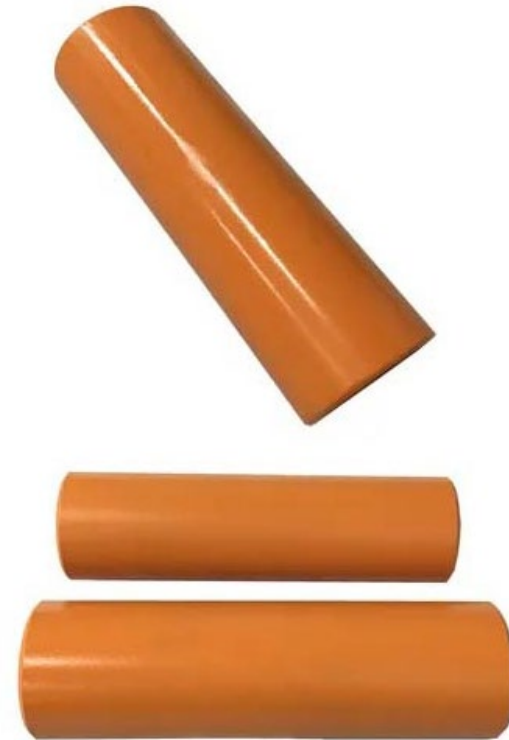
A reduction threaded coupling sleeve can change the thread type and size, for example, converting T45 to R38.

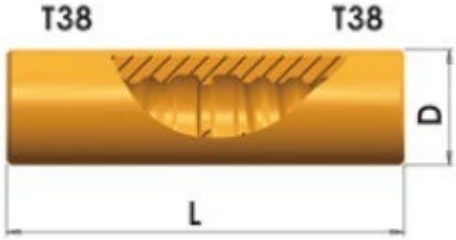
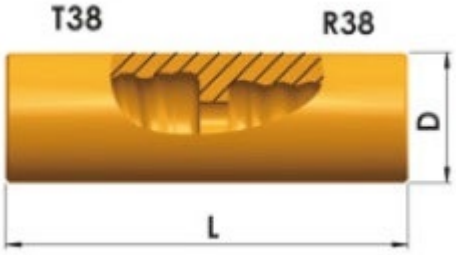
Instructions for using the T38 threaded coupling sleeve

1. First, screw the sleeve onto the male end of the drill rod until the shoulder of the sleeve contacts the end of the drill rod.
2. Then screw the other end of the drill rod into the female end of another coupling sleeve.
3. Use a torque wrench to tighten the connectors according to the manufacturer's recommended specifications.

Technical parameters of the T38 threaded coupler sleeve

- **Specification:** Available in middle stop and reduction types.
- **Thread connection types:** R38, T38, and T45 are available.
- **Length:** 190 mm and 207 mm optional.
- **Diameter:** 55 mm and 66 mm.
- **Material:** Forged high-strength alloy steel.
- **Manufacturing process:** Full carburizing heat treatment.
- **Weight:** From 1.8 kg to 3.2 kg.



Coupling sleeve	L (mm)	L (inch)	D (mm)	D (inch)	Thread	Order number	Weight (kg)
Middle stop 	190	7 1/2	55	2 5/32	T38	B302-5519-7676	1.8
Reduction 	190	7 1/2	55	2 5/32	T38, R38	B303-5519-7656	2.2
	190	7 1/2	55	2 5/32	T38, R32	B303-5519-7654	2.2
	207	8 1/16	66	2 3/8	T38, T45	B303-6620-7677	3.2

<https://www.beentools.com>